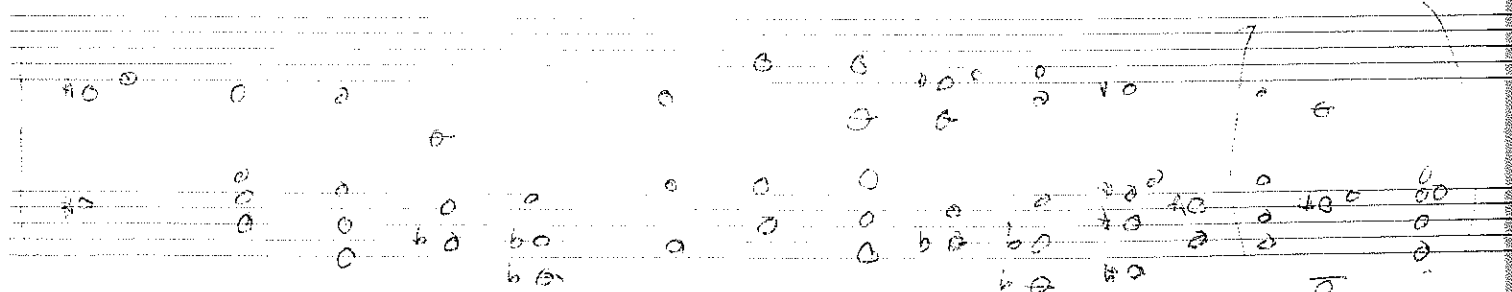
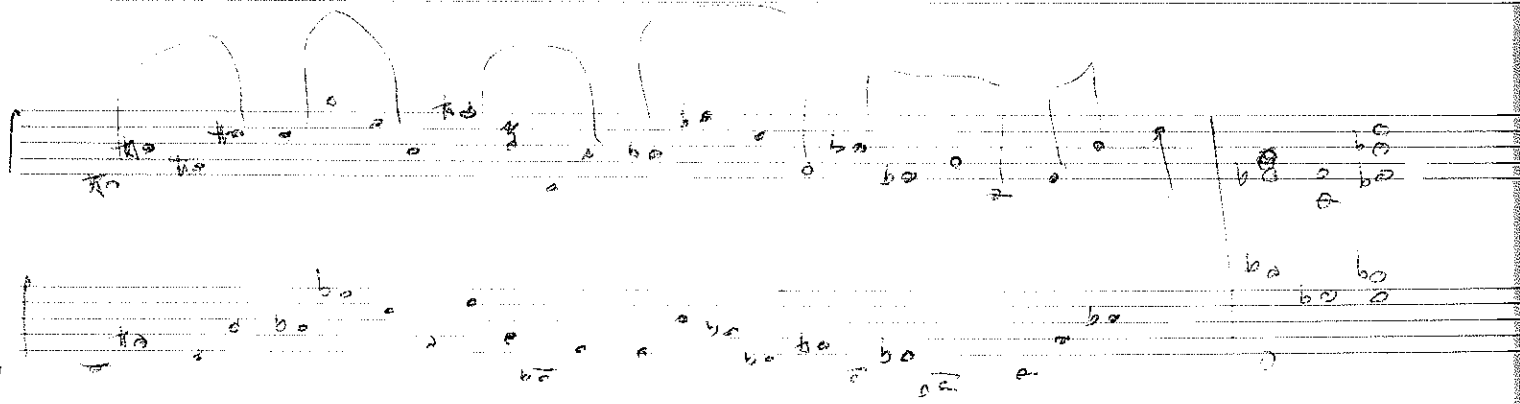
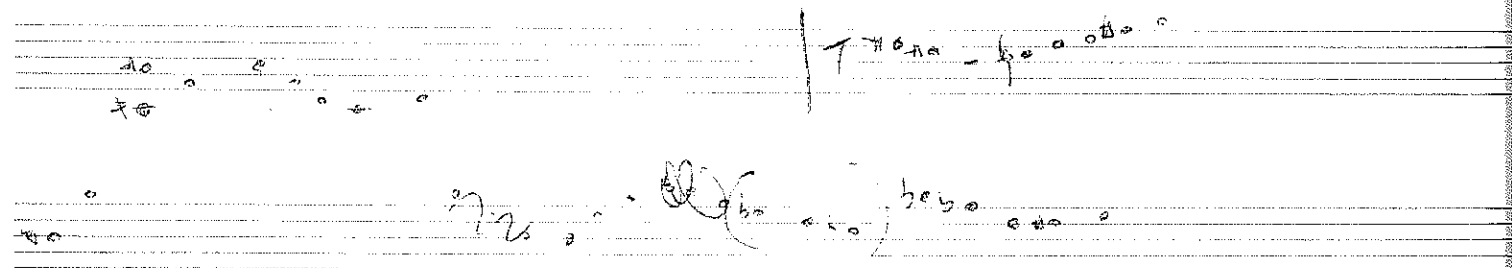
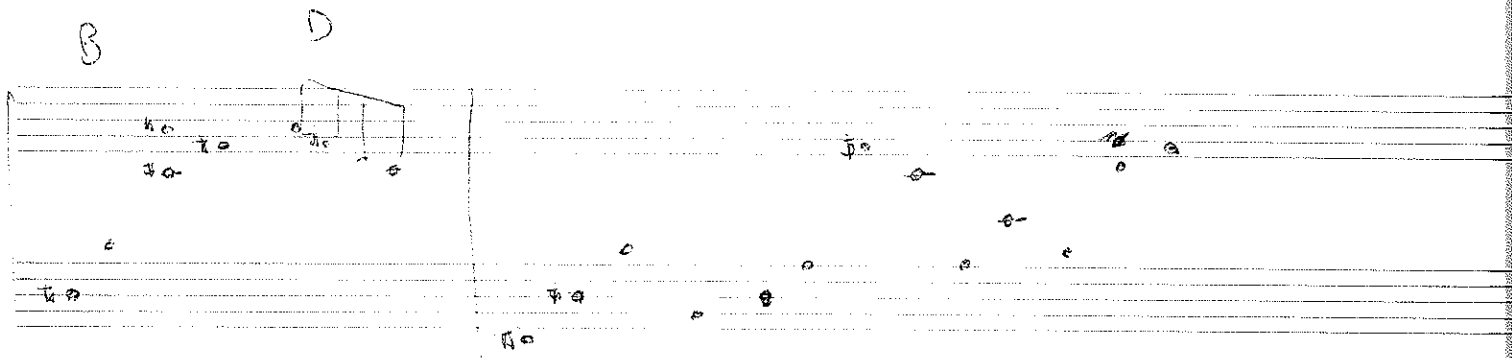
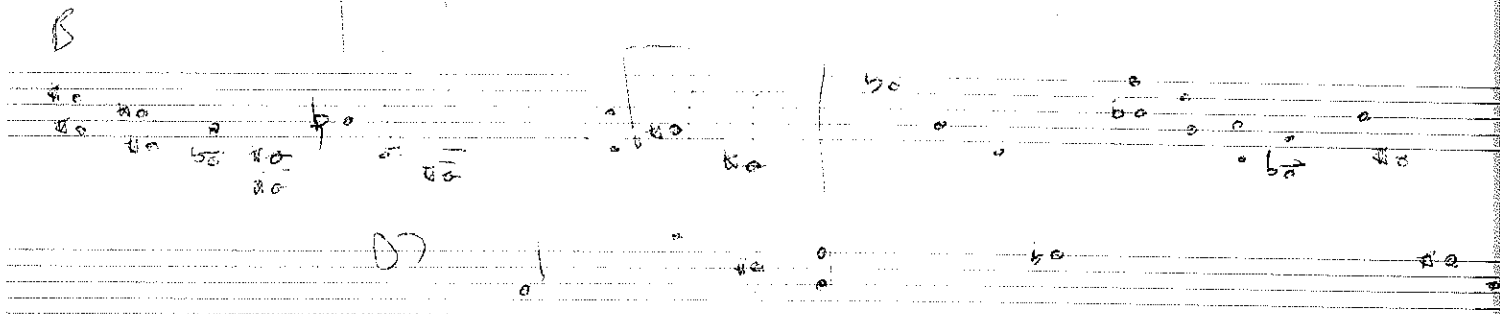
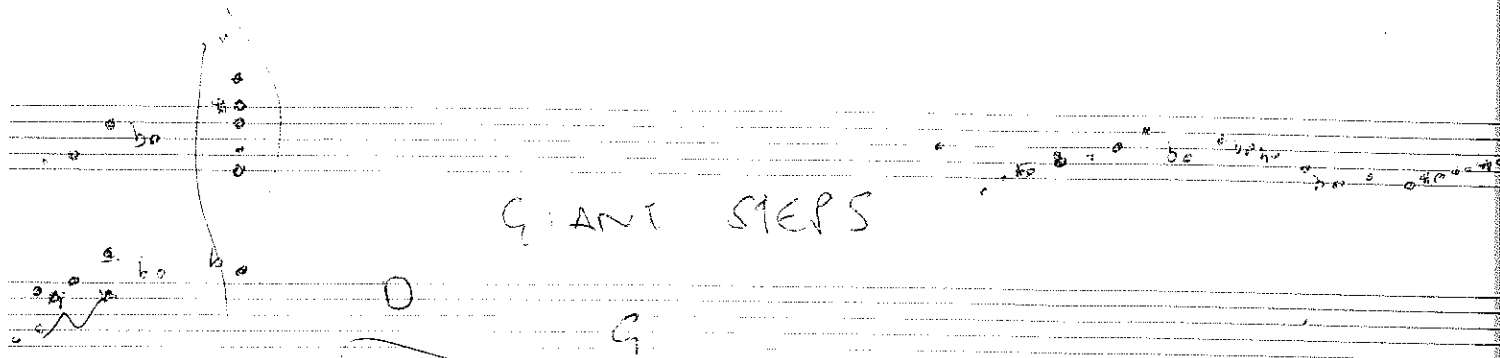


GIANT STEPS



SPECIAL DELIVERY

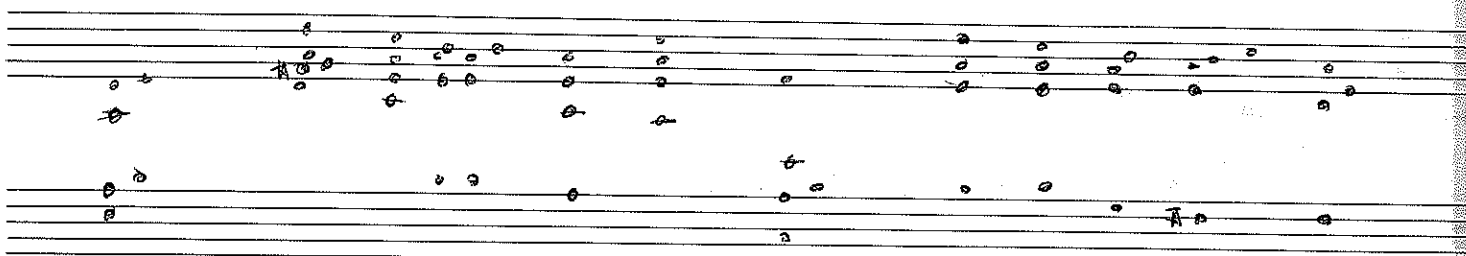
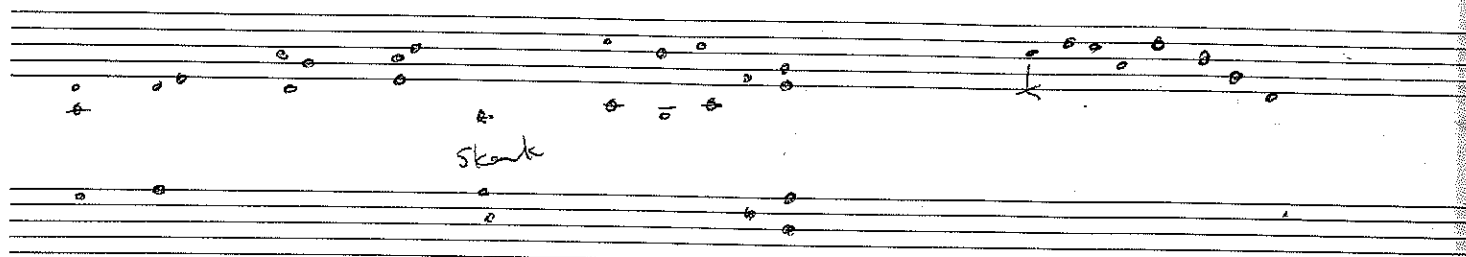
Handwritten musical notation for the first system of 'SPECIAL DELIVERY'. The notation is spread across three staves. The top staff contains a series of notes, some with accidentals (sharps and flats), and a final measure with a circled note. The middle staff contains a series of notes, some with accidentals, and a final measure with a circled note. The bottom staff contains a series of notes, some with accidentals, and a final measure with a circled note.

Handwritten musical notation for the second system of 'SPECIAL DELIVERY'. The notation is spread across two staves. The top staff begins with a treble clef and a key signature of one flat (B-flat). It contains a series of notes, some with accidentals, and a final measure with a circled note. The bottom staff contains a series of notes, some with accidentals, and a final measure with a circled note.

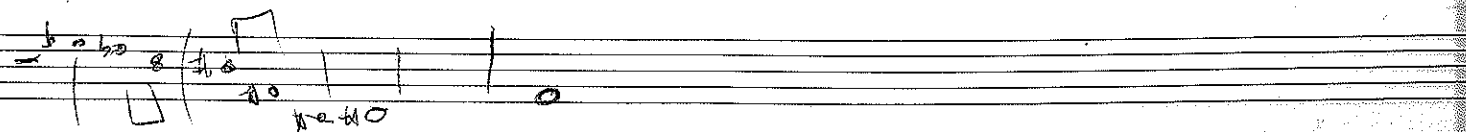
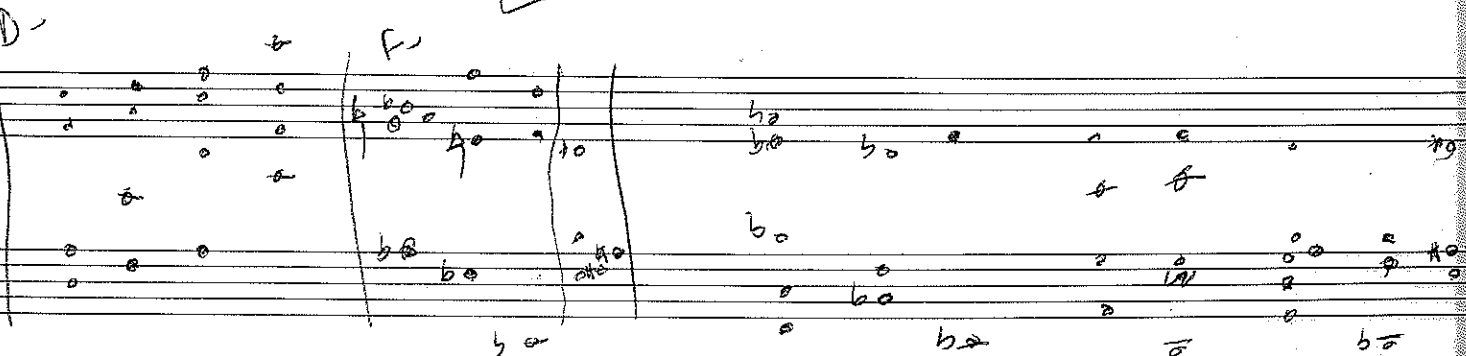
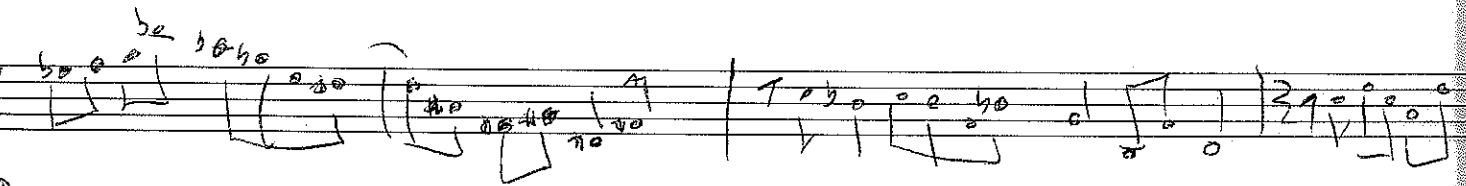
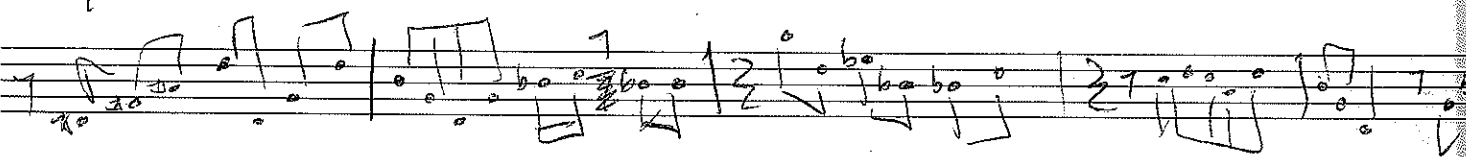
Handwritten musical notation for the third system of 'SPECIAL DELIVERY'. The notation is spread across two staves. The top staff begins with a treble clef and a key signature of one flat (B-flat). It contains a series of notes, some with accidentals, and a final measure with a circled note. The bottom staff contains a series of notes, some with accidentals, and a final measure with a circled note.

Handwritten musical notation for the fourth system of 'SPECIAL DELIVERY'. The notation is spread across two staves. The top staff begins with a treble clef and a key signature of one flat (B-flat). It contains a series of notes, some with accidentals, and a final measure with a circled note. The bottom staff contains a series of notes, some with accidentals, and a final measure with a circled note.

Deedoes

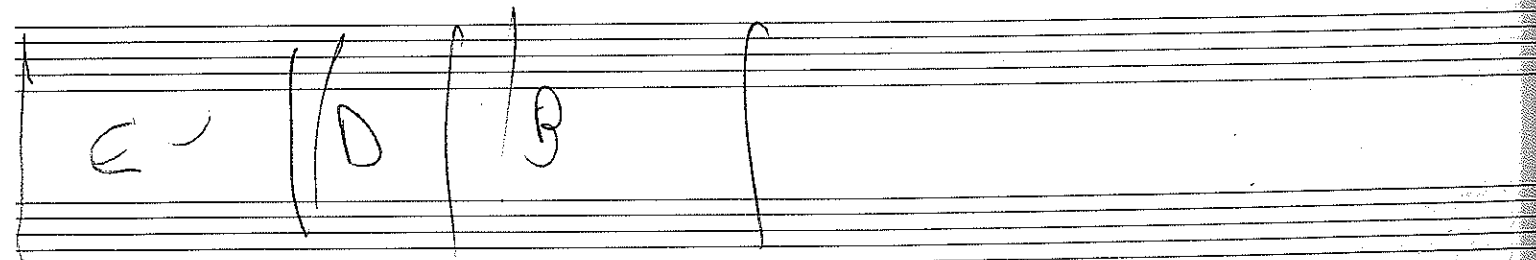
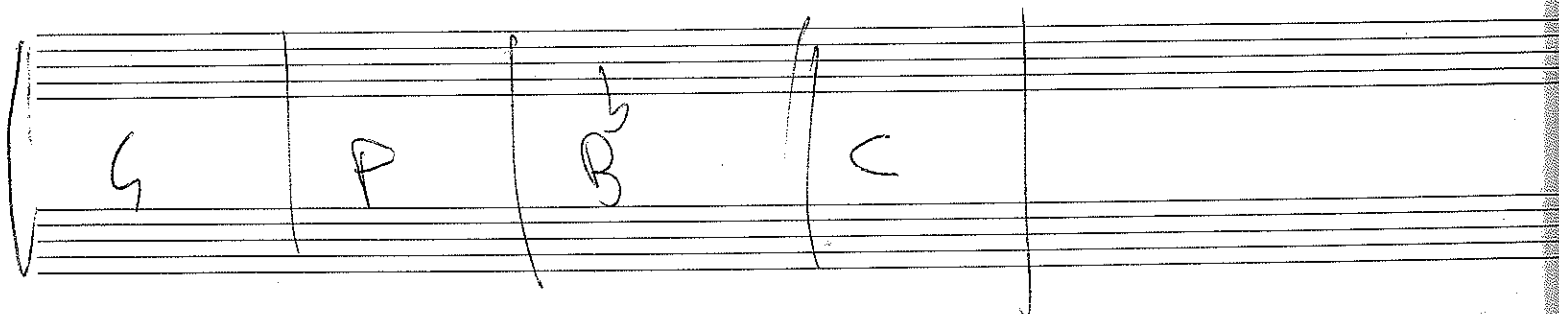
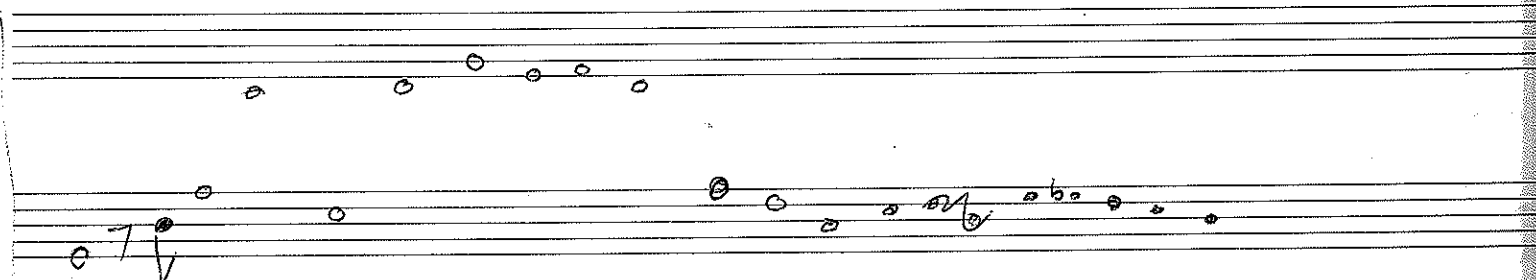
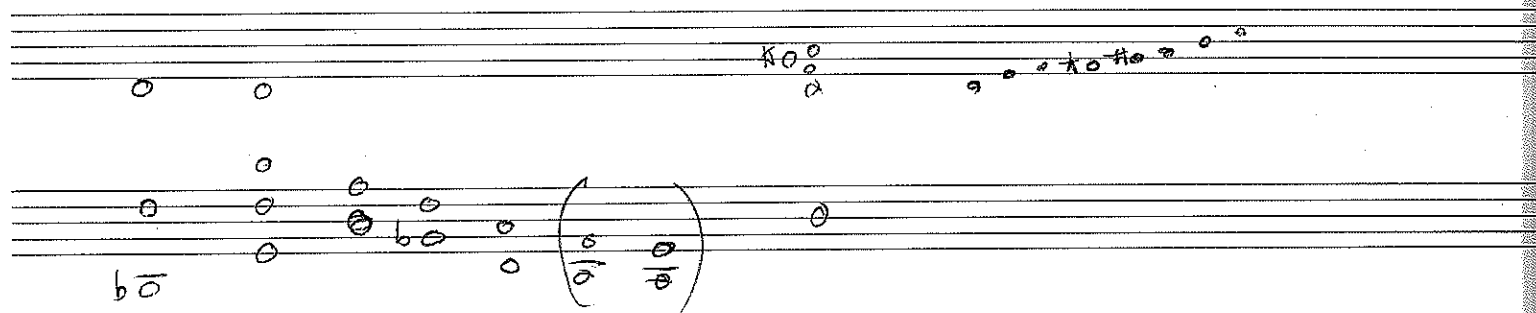
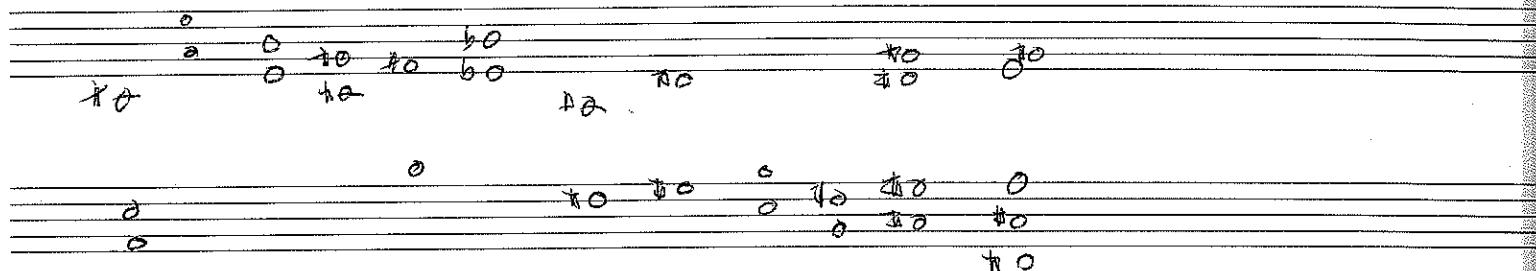
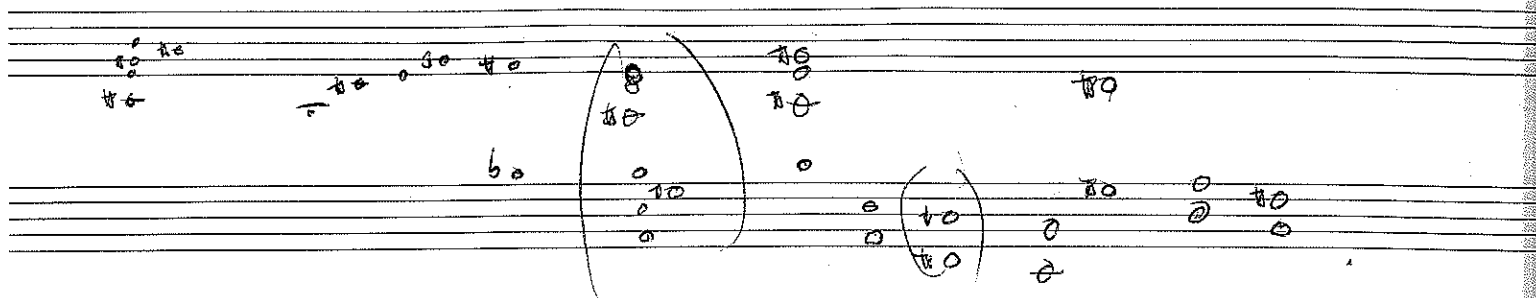


GIANT



Handwritten notes and symbols at the top left of the page.

1



Handwritten musical notation on two staves. The top staff has notes with accidentals (sharps and flats) and some notes are beamed together. The bottom staff has notes with accidentals and some notes are beamed together. There are also some isolated notes below the bottom staff.

Handwritten musical notation on two staves. The top staff has notes with accidentals and some notes are beamed together. The bottom staff has notes with accidentals and some notes are beamed together. There are also some isolated notes below the bottom staff.

Handwritten musical notation on two staves. The top staff has notes with accidentals and some notes are beamed together. The bottom staff has notes with accidentals and some notes are beamed together. There are also some isolated notes below the bottom staff.

C pedal

(0)

P^h

E

Handwritten musical notation on a single staff. It starts with a bar line, followed by a series of notes with accidentals and some notes are beamed together. There are also some isolated notes below the staff.

Handwritten musical notation on a five-line staff. The notation includes various notes, rests, and accidentals (sharps, flats, naturals). A large bracket is drawn over the first few measures. The word "gva" is written above the staff on the right side.

Handwritten musical notation on a five-line staff, continuing the piece. It features several measures with notes and accidentals.

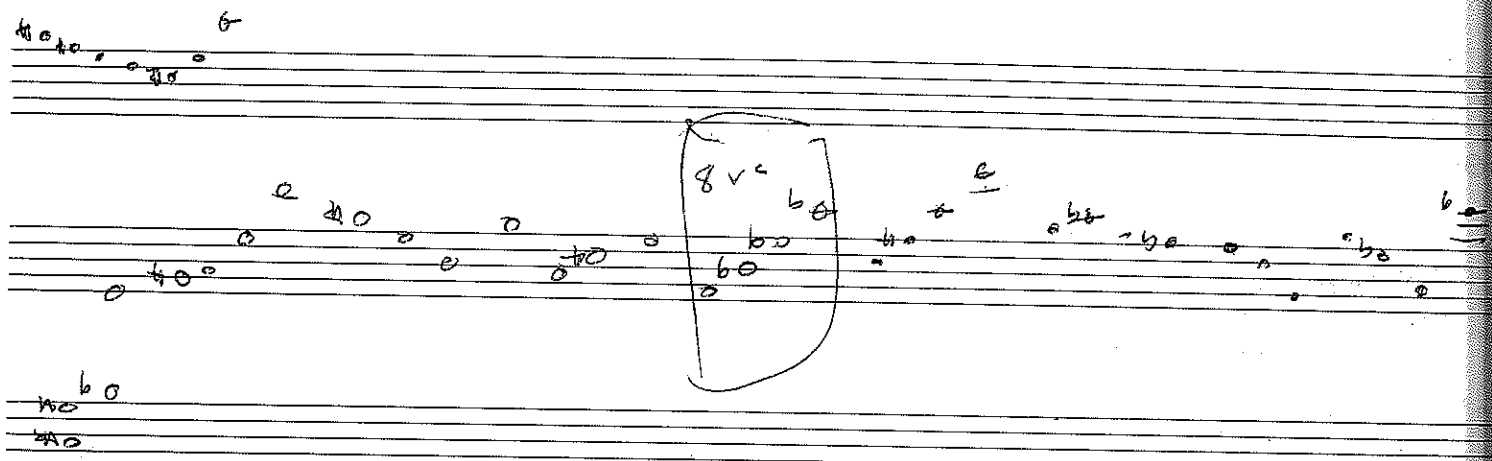
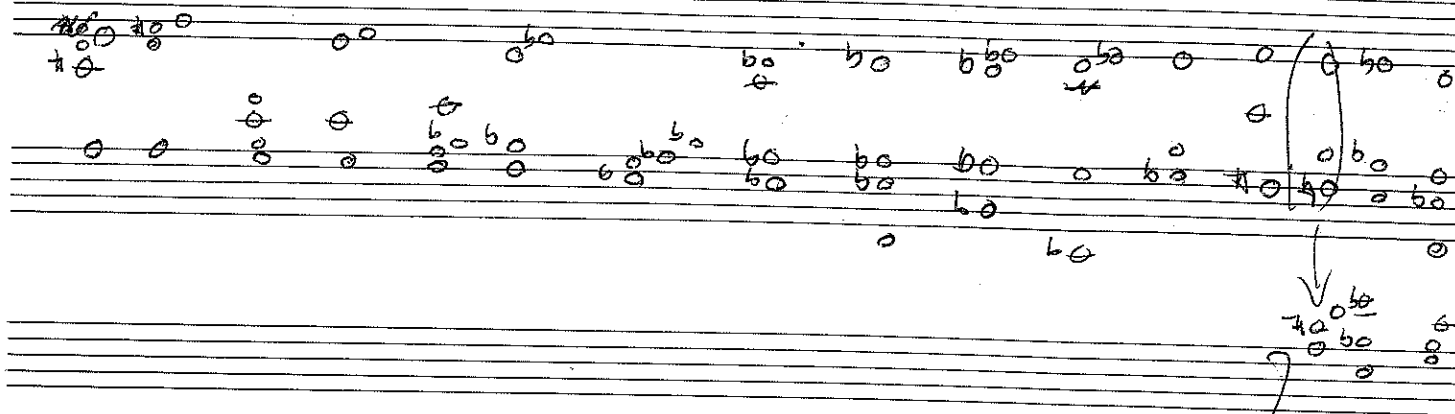
Handwritten musical notation on a five-line staff. A double bar line is present, followed by a key signature change to one sharp (F#). The notation continues with notes and accidentals.

Handwritten musical notation on a five-line staff. A double bar line is present, followed by a key signature change to one flat (Bb). The notation continues with notes and accidentals.

GENIUS.

Handwritten musical notation on a five-line staff, enclosed in a large bracket. It includes notes and accidentals.

F^b - B^b E^b A^b D^b G^b C^b F^b B^b E^b Det 3



4

$E - A7 \mid A^b7 \ F^b7 \mid E7 \ F7 \mid B^b - B \mid A^b - \mid D^b$

$E^b \mid A \mid A7 \mid B \mid B/A \mid A^b - \mid D^b$

Handwritten musical notation on two staves. The top staff contains a sequence of notes with flats, some beamed together. The bottom staff has a few notes and a vertical line. A small 'x' mark is written between the staves.

no

Handwritten musical notation on two staves, showing notes with flats.

on a clear day

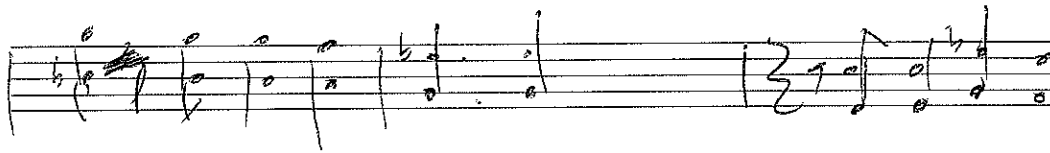
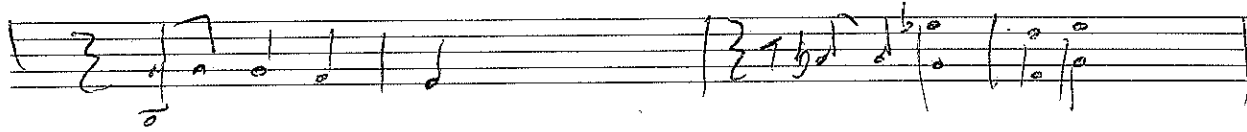
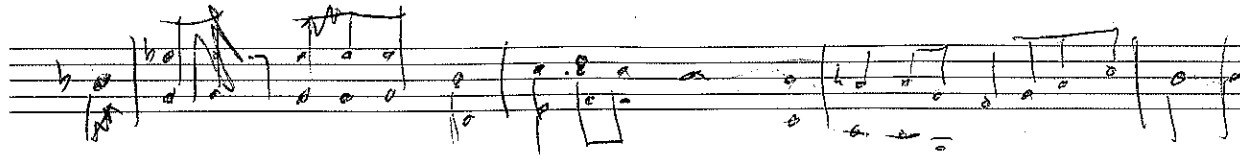
Handwritten musical notation on two staves. The top staff has notes with flats and a large bracket. The bottom staff has notes with flats and a curved arrow pointing to a specific note.

Handwritten musical notation on two staves. The top staff has notes with flats and a large bracket. The bottom staff has notes with flats and a large bracket.

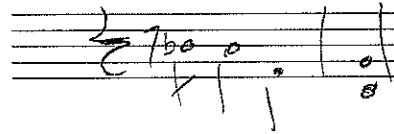
Handwritten musical notation on two staves. The top staff has notes with flats and a large bracket. The bottom staff has notes with flats and a large bracket.

Handwritten musical notation on two staves. The top staff has notes with flats and a large bracket. The bottom staff has notes with flats and a large bracket.

1 2 3 4 5

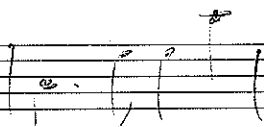


Bride



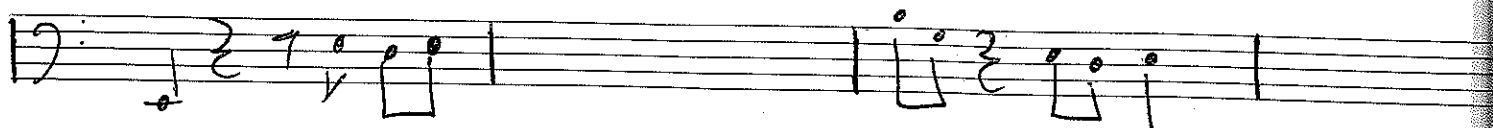
PACIFICA

Bob

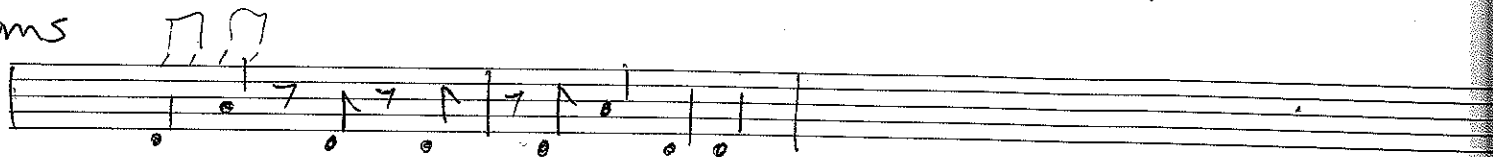


Bass E -

SO UNFEASIBLE



Drums



Lead



on Q A7 Cymbal



Batt

E -



IS IT NOW

A

Handwritten musical notation for section A. The top staff features a treble clef and a melody of eighth notes. Below the notes are the letters E, G, E, F, C, A, B, F, F. The middle and bottom staves have bass clefs and contain sparse notes.

B

Handwritten musical notation for section B. The top staff features a treble clef and a melody of eighth notes. The middle and bottom staves have bass clefs and contain sparse notes.

C

D

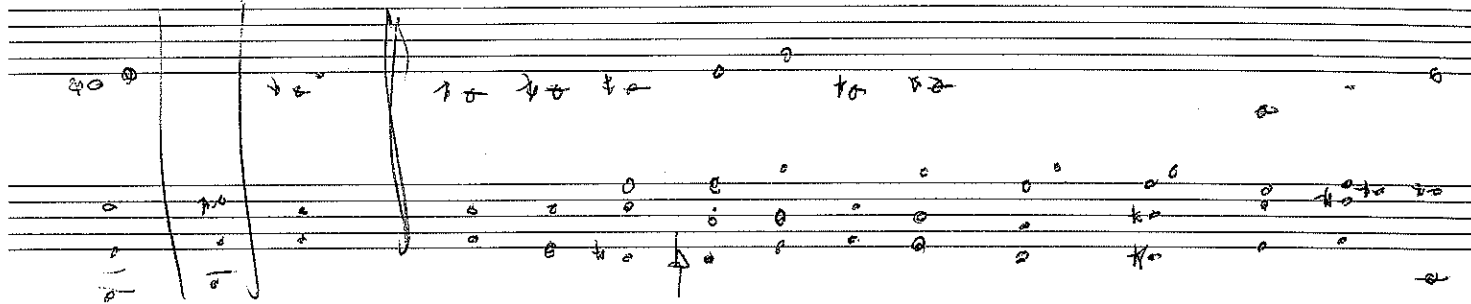
Handwritten musical notation for sections C and D. Section C is on the left, section D is on the right. Each section has three staves. Section C has a treble clef and a melody of eighth notes. Section D has a treble clef and a melody of eighth notes. Both sections have bass clefs on the middle and bottom staves.

E

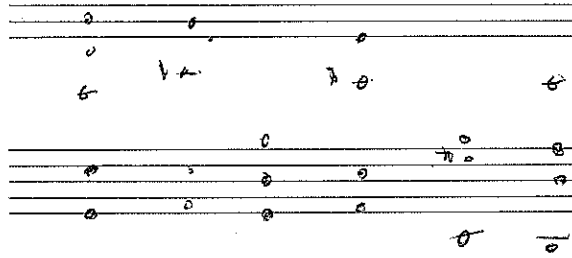
3x

Handwritten musical notation for section E. The top staff features a treble clef and a melody of eighth notes. The middle and bottom staves have bass clefs and contain sparse notes.

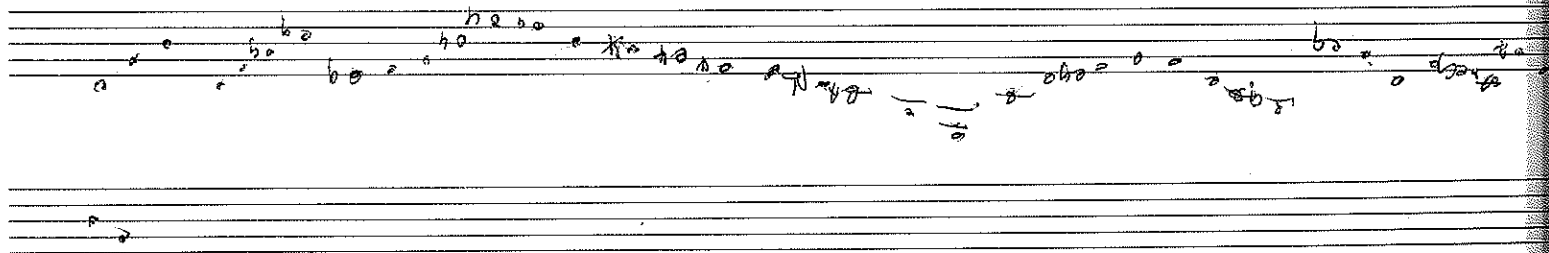
walrus



the cry

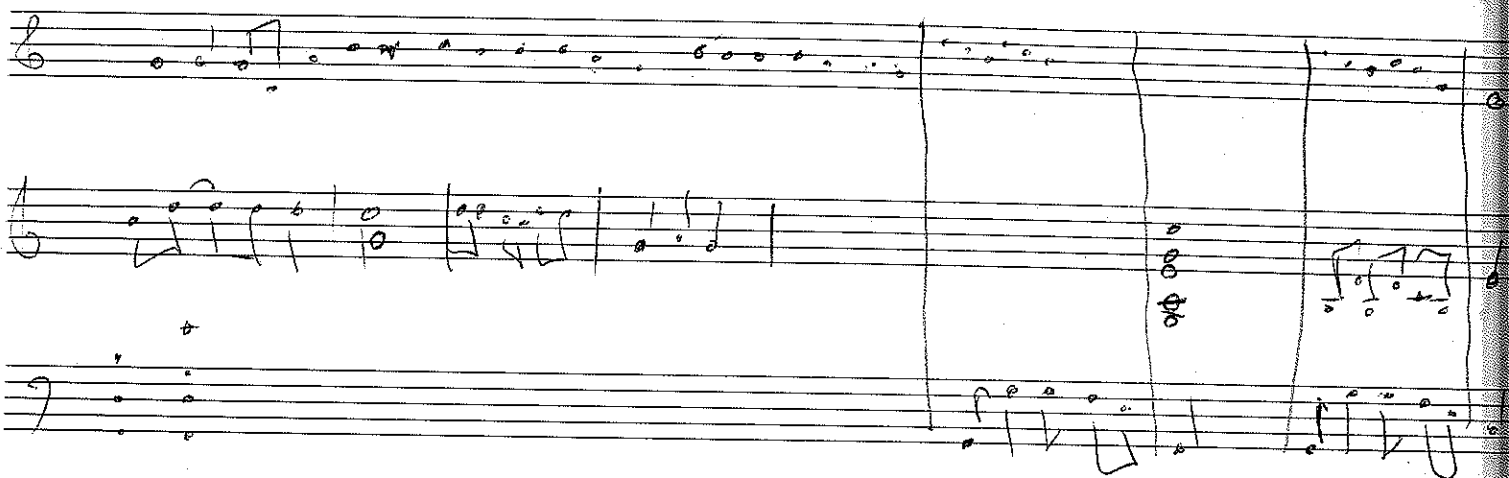
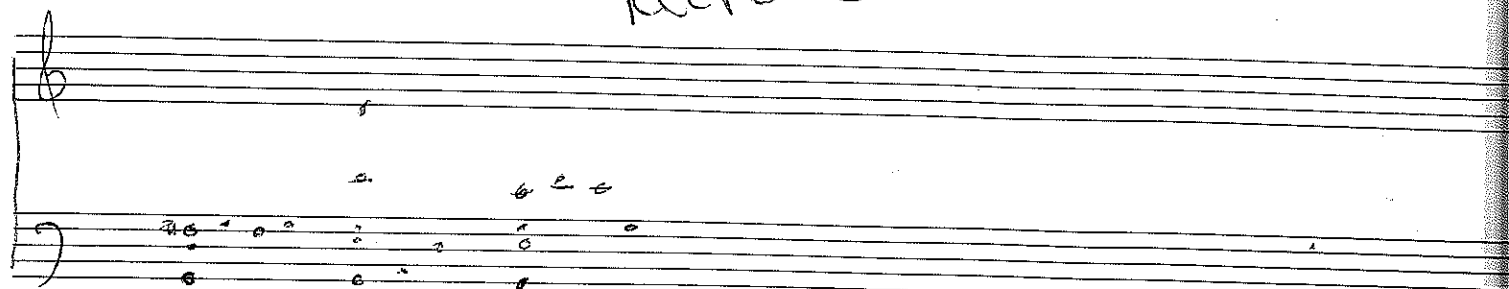


A G F E D C B

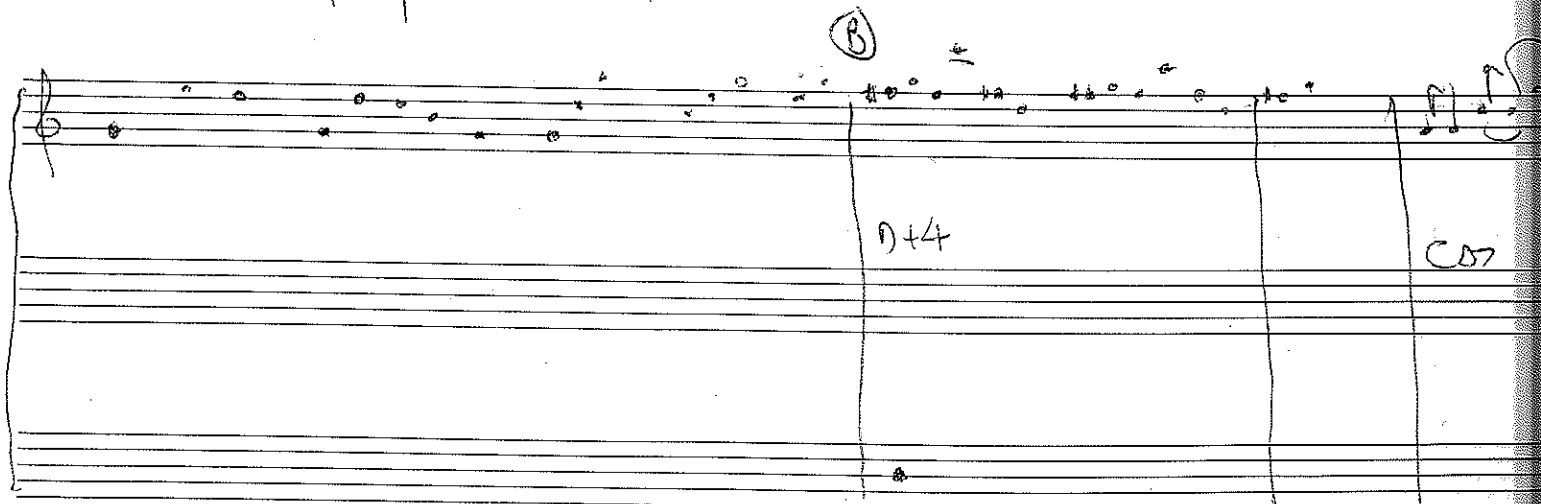
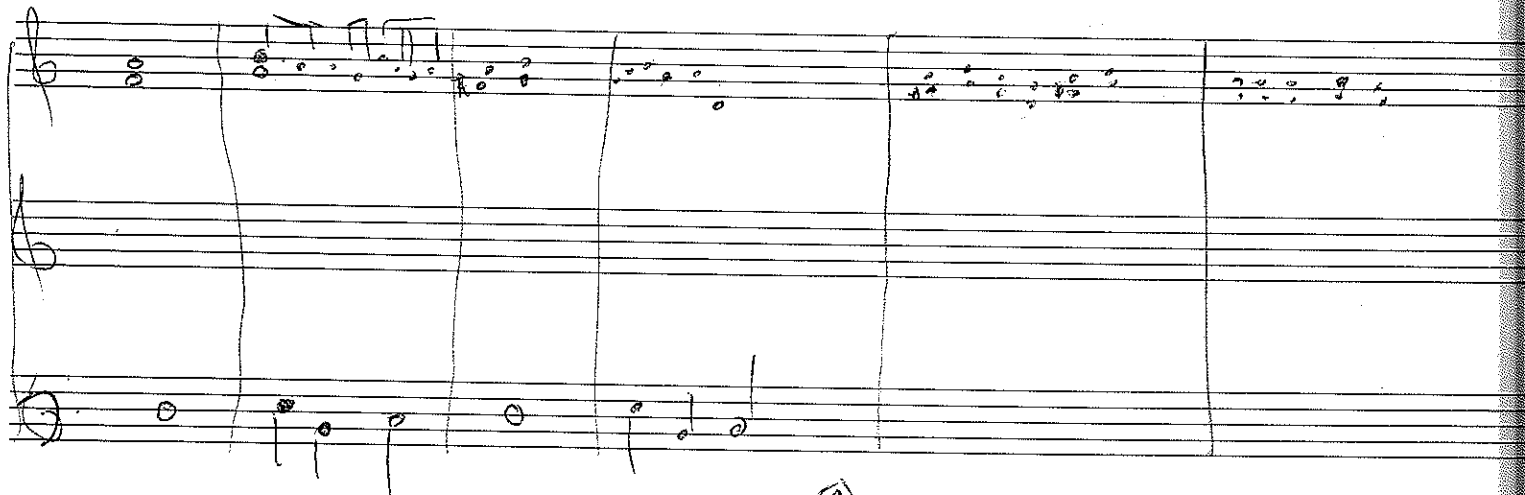


I AM
A WALRUS

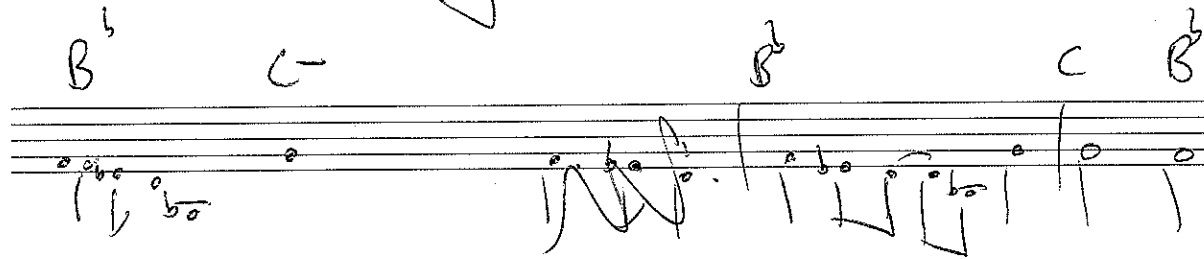
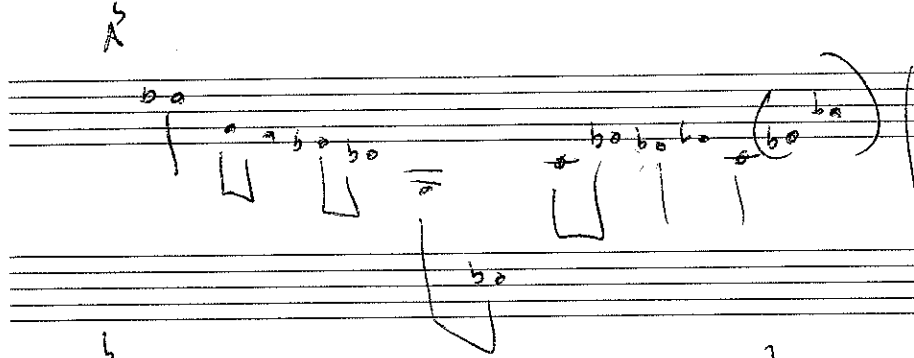
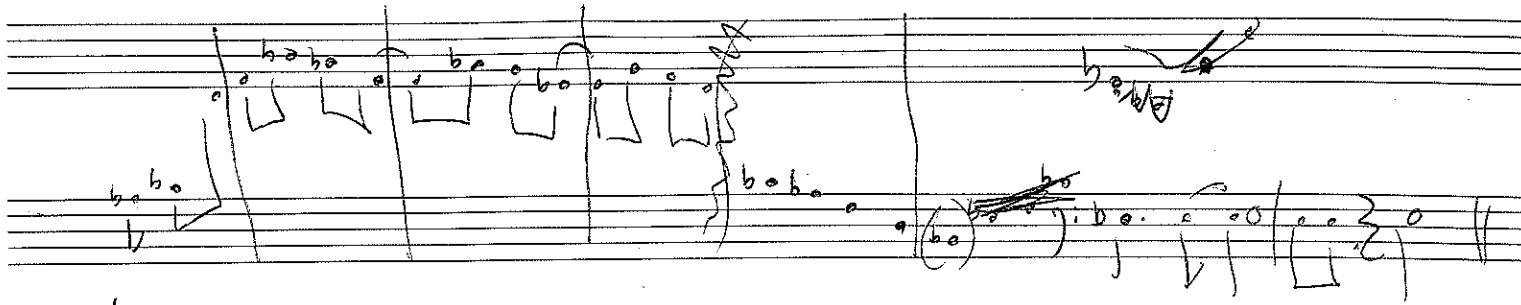
KEEPERS



chorus

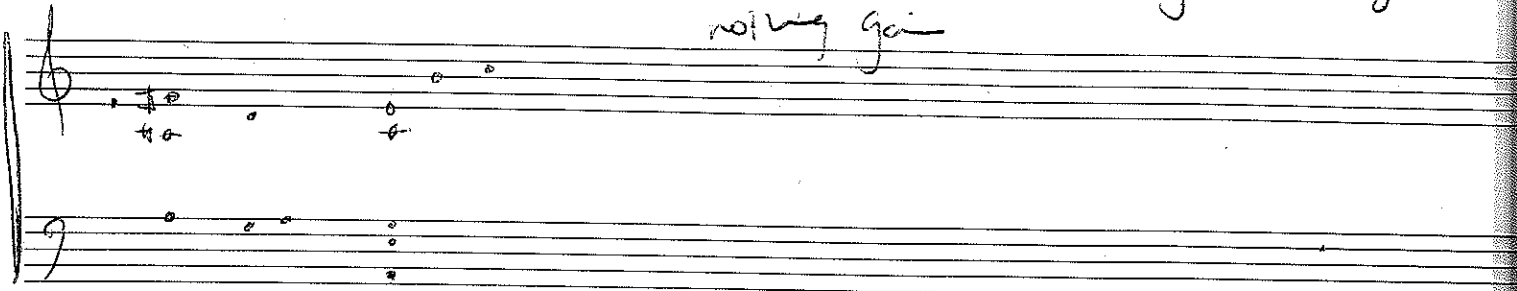


BLUES 151

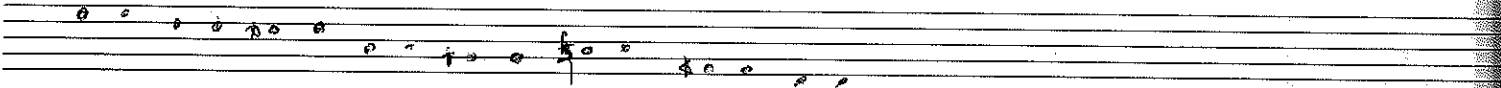


nothing lost
nothing gain

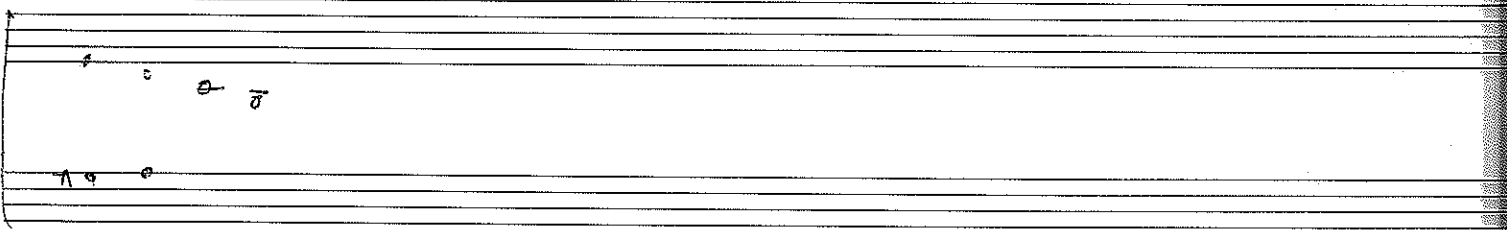
magnetic tape



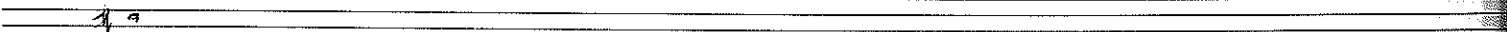
Dreamworld

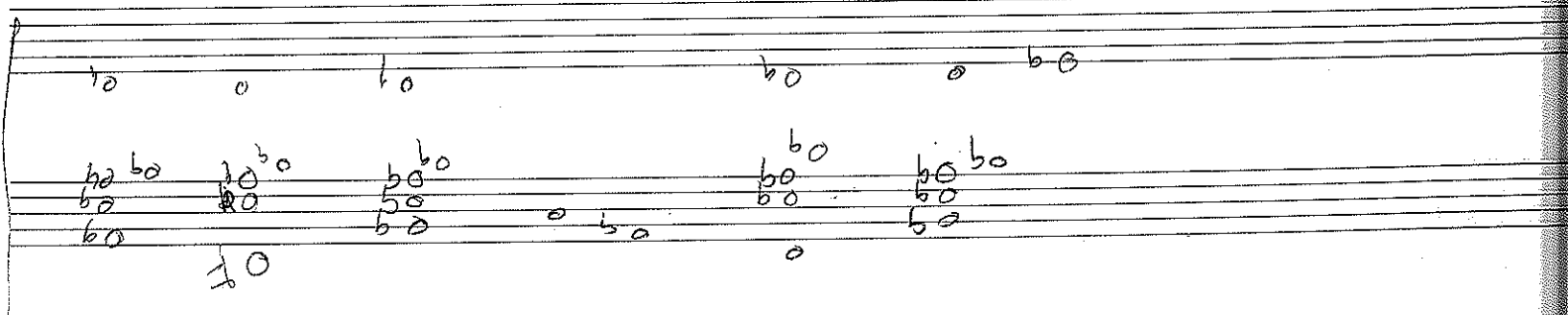
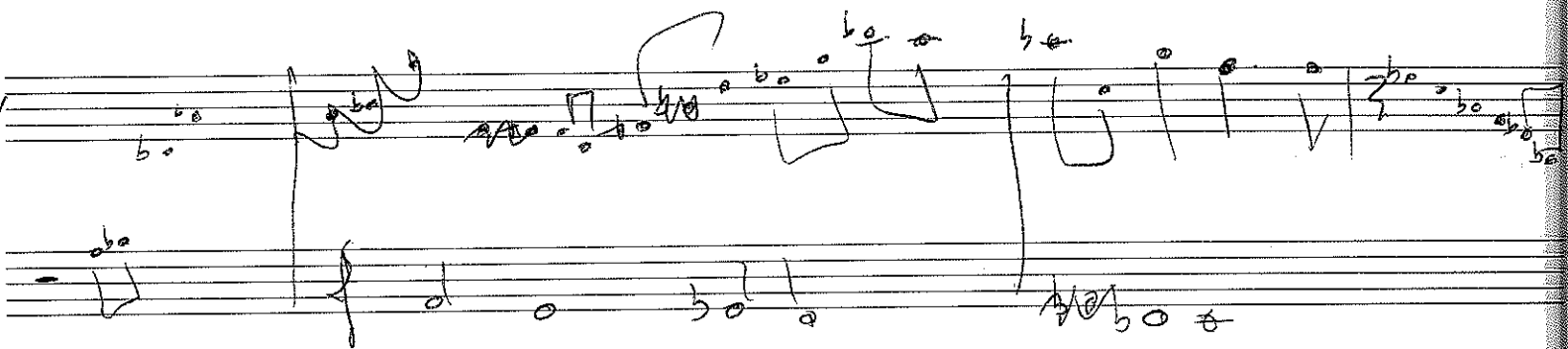
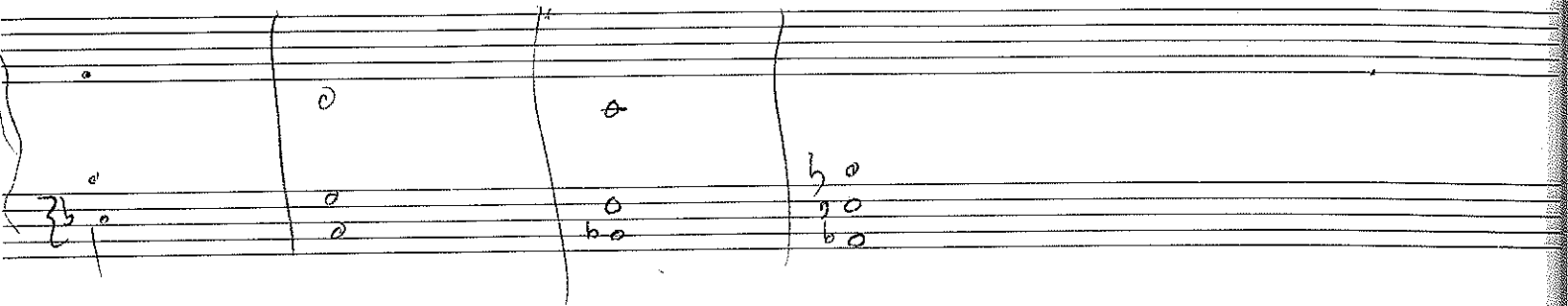


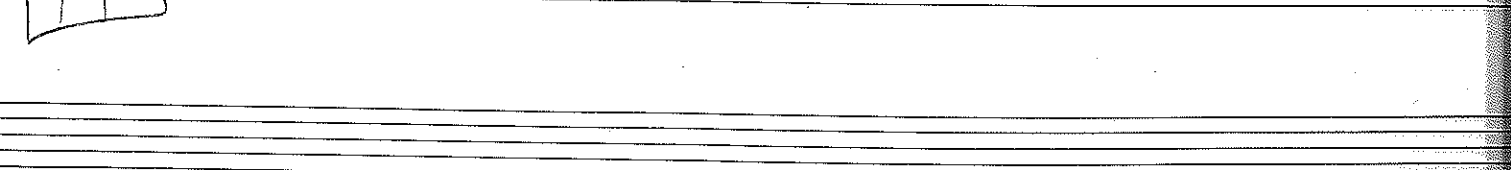
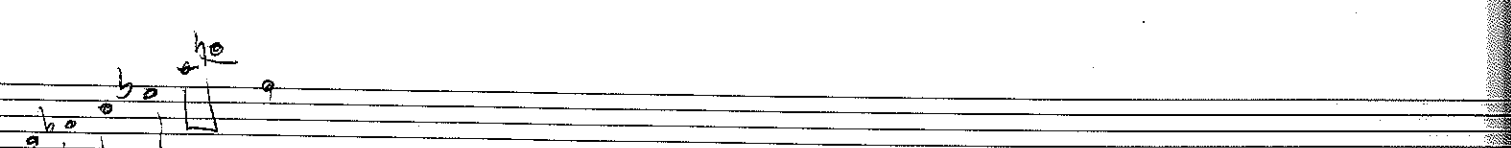
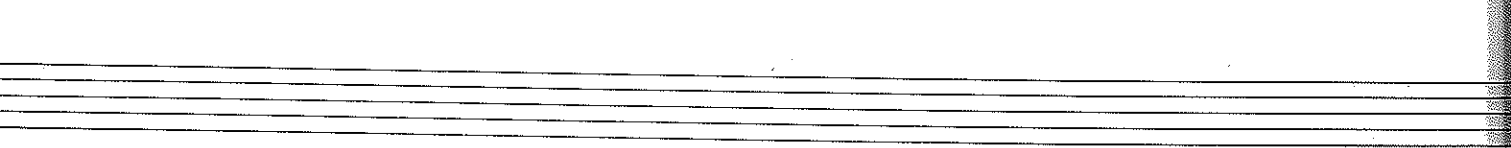
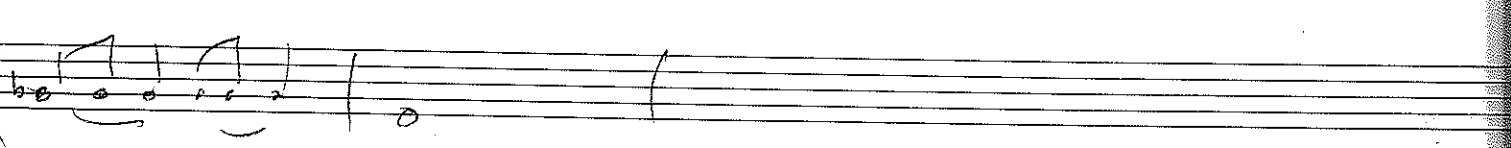
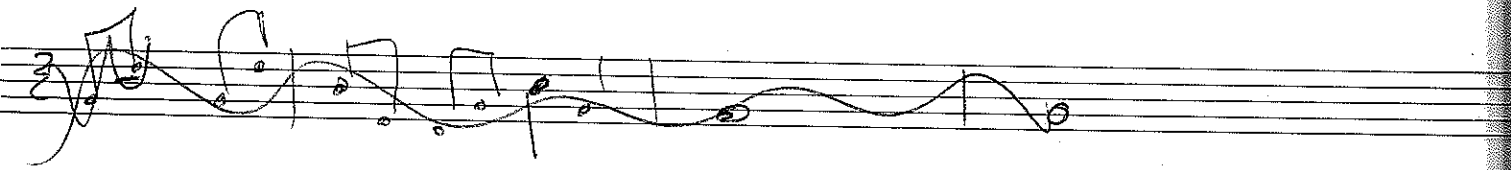
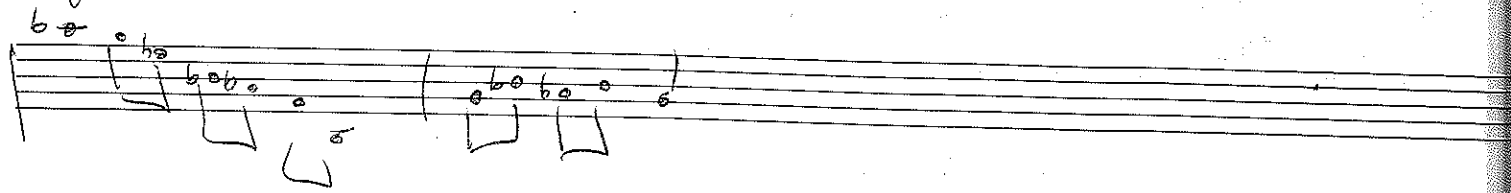
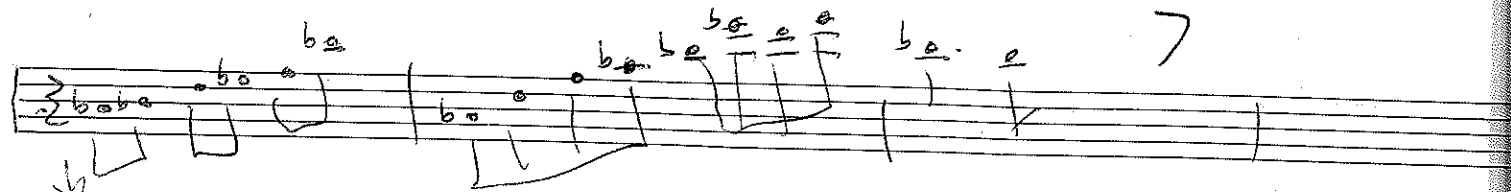
9 D 5 P E B



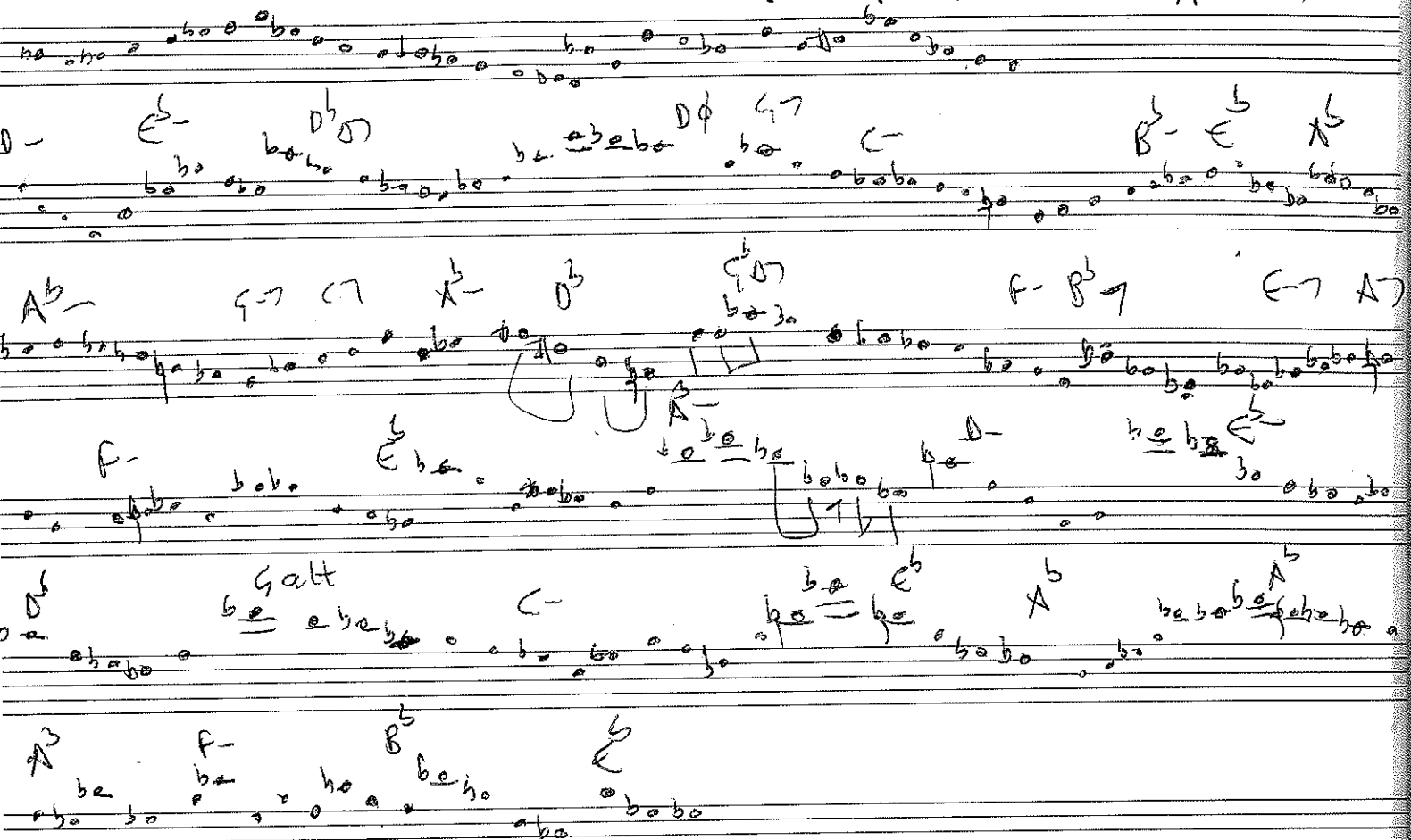
Wawa







Moment notice

$$\leftarrow F - B \rightarrow A - D \rightarrow$$


groove

Handwritten musical notation on a five-line staff. It begins with a treble clef and a key signature of one sharp (F#). The melody consists of eighth and quarter notes, followed by a double bar line. Below the staff, there are some scattered notes and a small 'o' mark.

Handwritten musical notation on a five-line staff. It features a treble clef and a key signature of one sharp. The notation includes various note values (half, quarter, eighth notes) and rests, with a double bar line. There are also some additional notes and symbols written below the staff.

Handwritten musical notation on a five-line staff. It starts with a treble clef and a key signature of one sharp. The notation includes a few notes and rests, followed by a double bar line. There are also some additional notes and symbols written below the staff.

A series of empty five-line musical staves, providing space for further notation.

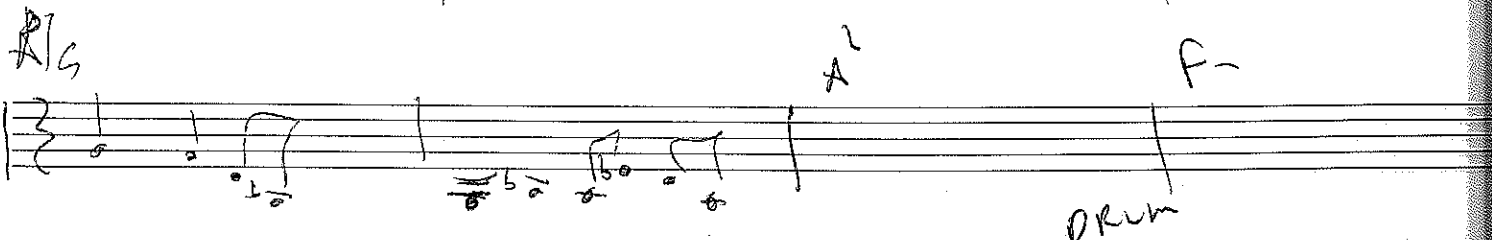
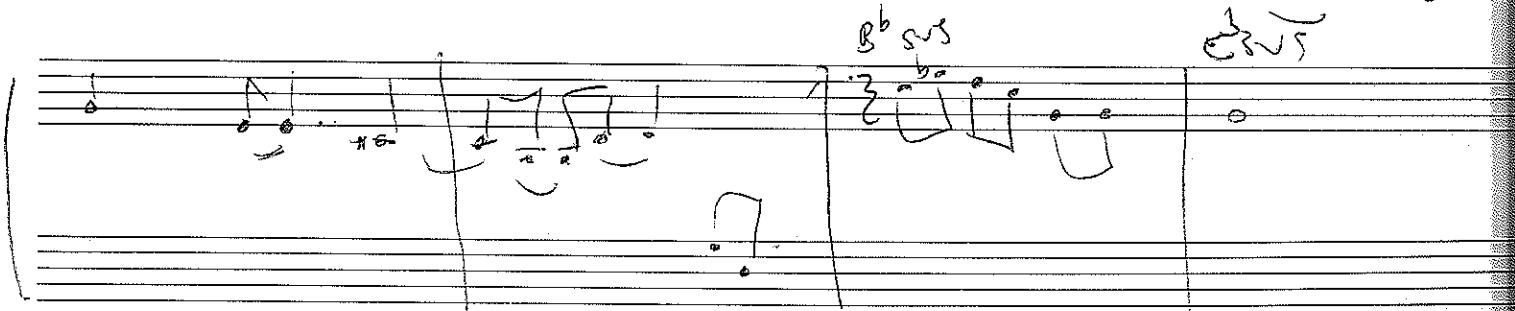
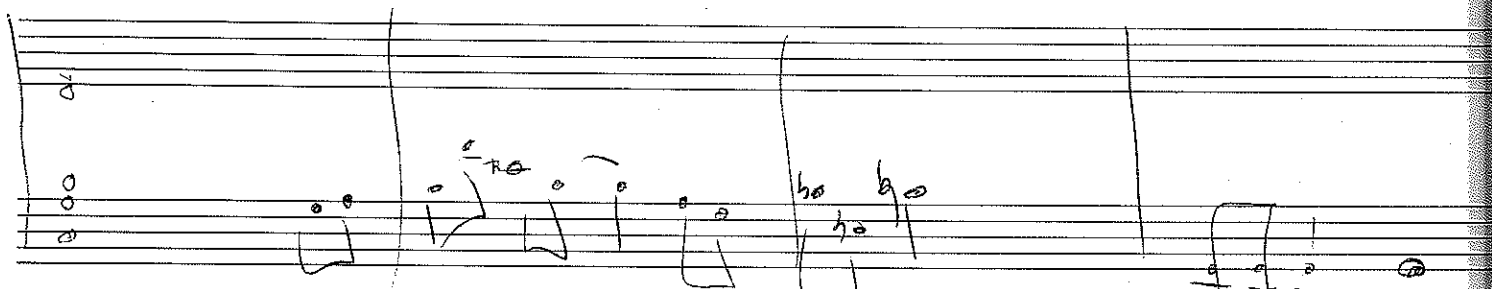
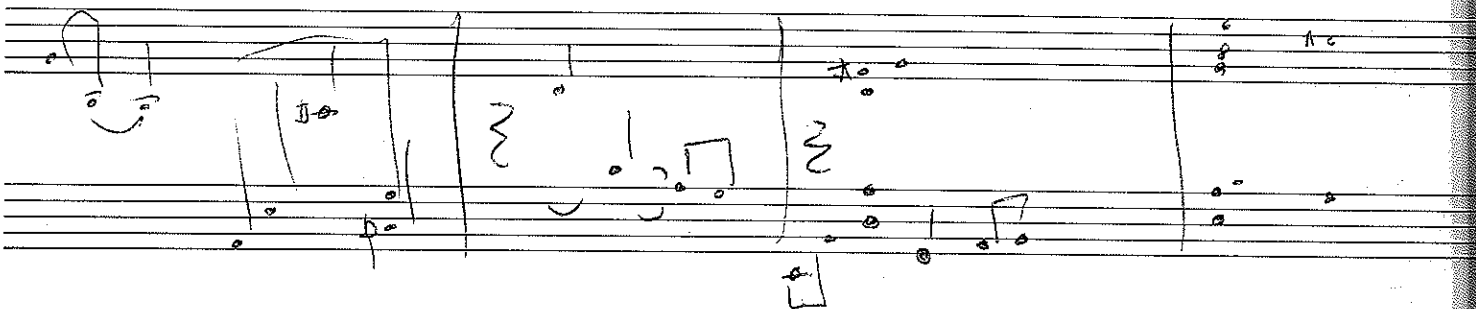
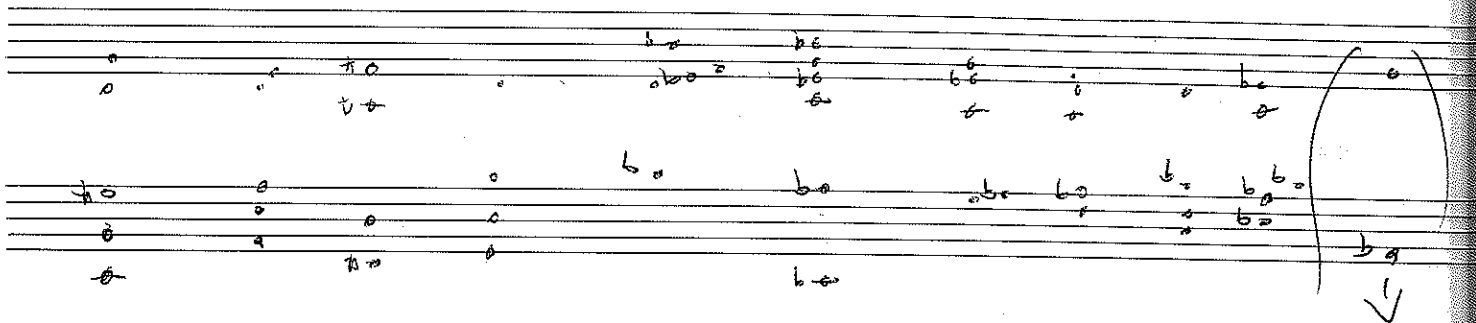
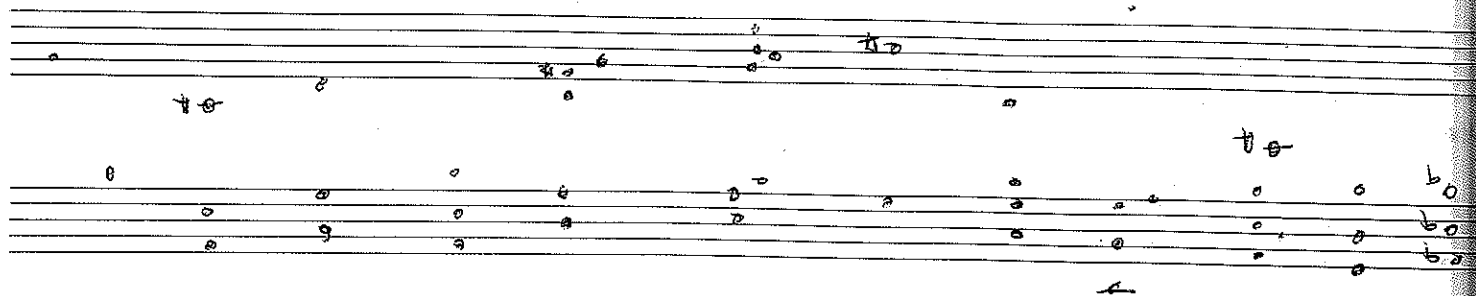
8

Handwritten musical notation on five staves. The notation includes various notes (half notes, quarter notes, eighth notes), rests, and accidentals (sharps, flats, naturals). The first staff has a treble clef and a key signature of one sharp (F#). The second staff has a treble clef and a key signature of one sharp (F#). The third staff has a treble clef and a key signature of one sharp (F#). The fourth staff has a treble clef and a key signature of one sharp (F#). The fifth staff has a treble clef and a key signature of one sharp (F#). The notation is written in a style that suggests a musical score for a piece of music.

02 rock

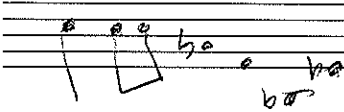
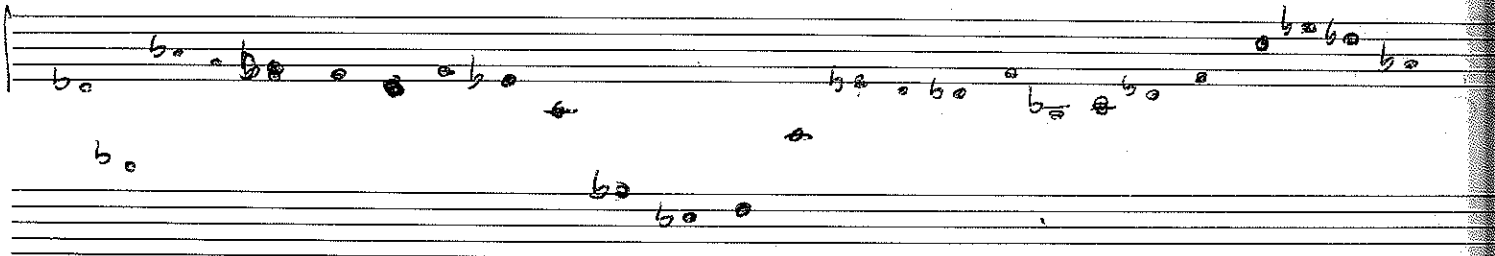
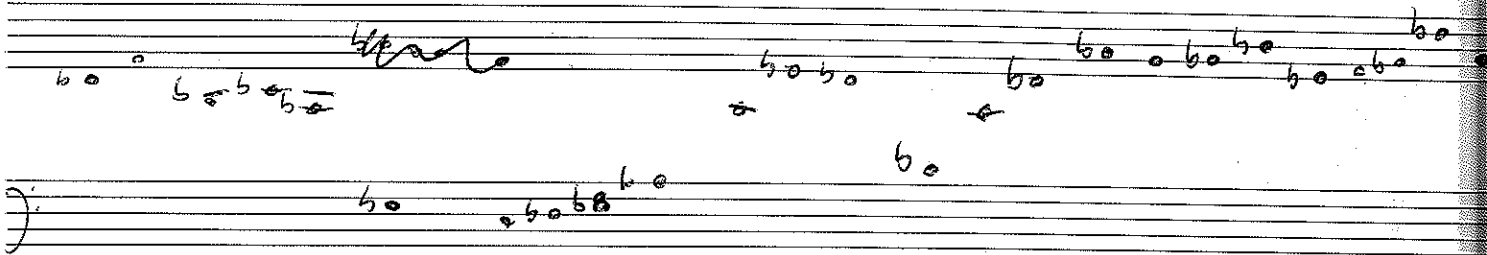
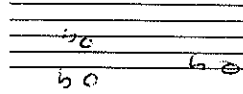
Handwritten musical notation on five staves. The notation includes various notes (half notes, quarter notes, eighth notes), rests, and accidentals (sharps, flats, naturals). The first staff has a treble clef and a key signature of one sharp (F#). The second staff has a treble clef and a key signature of one sharp (F#). The third staff has a treble clef and a key signature of one sharp (F#). The fourth staff has a treble clef and a key signature of one sharp (F#). The fifth staff has a treble clef and a key signature of one sharp (F#). The notation is written in a style that suggests a musical score for a piece of music.

IS MUSIC DEAD?



The musical notation is spread across five staves. The first staff has a large loop around a group of symbols. The second staff has a large loop around a group of symbols. The third staff has a large loop around a group of symbols. The fourth staff has a large loop around a group of symbols. The fifth staff has a large loop around a group of symbols. The symbols are arranged in a way that suggests musical notation, but they are not standard musical notation. They include circles, lines, and letters, and are arranged in a way that suggests a sequence or a flow.

But remember
 what I tell you
 in time you'll see
 & it's surprise



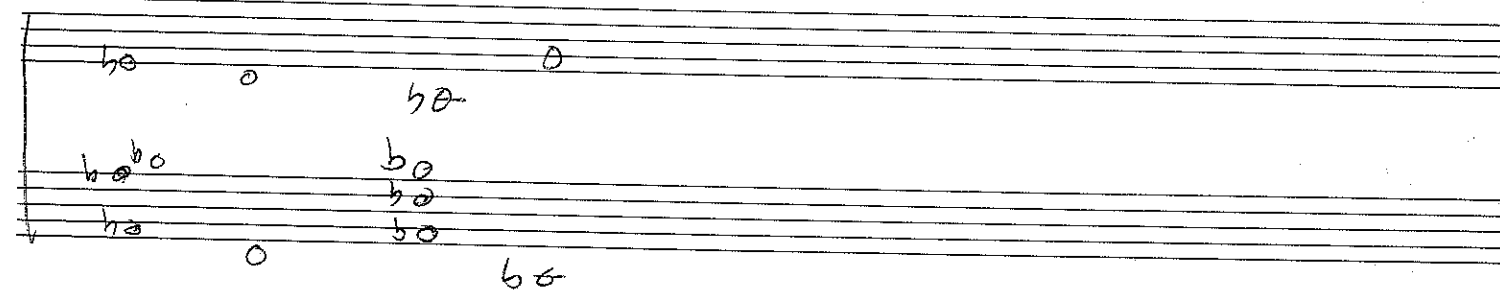
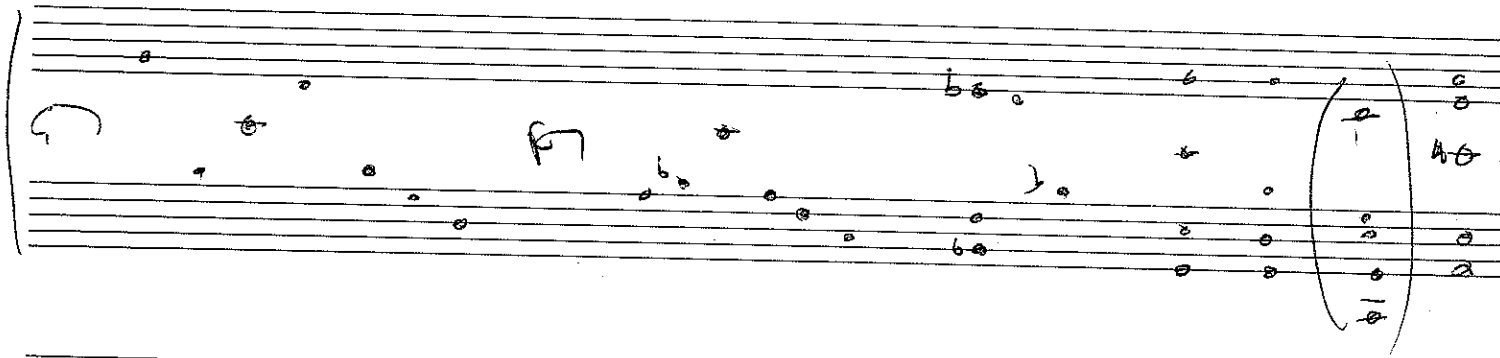
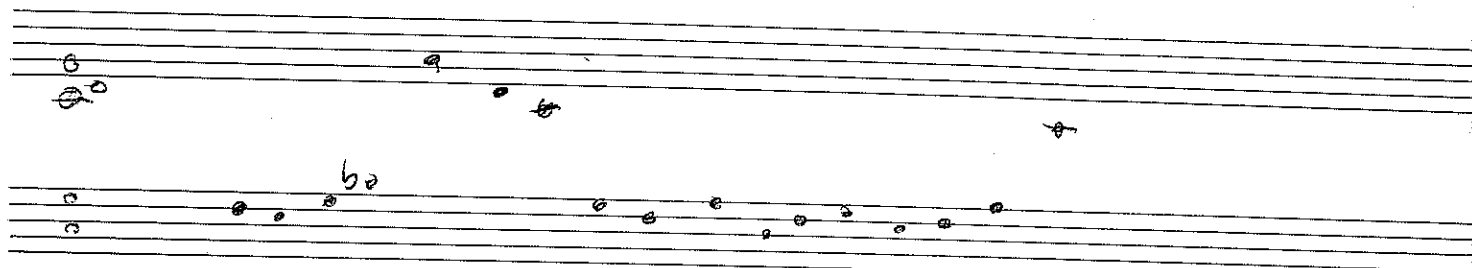
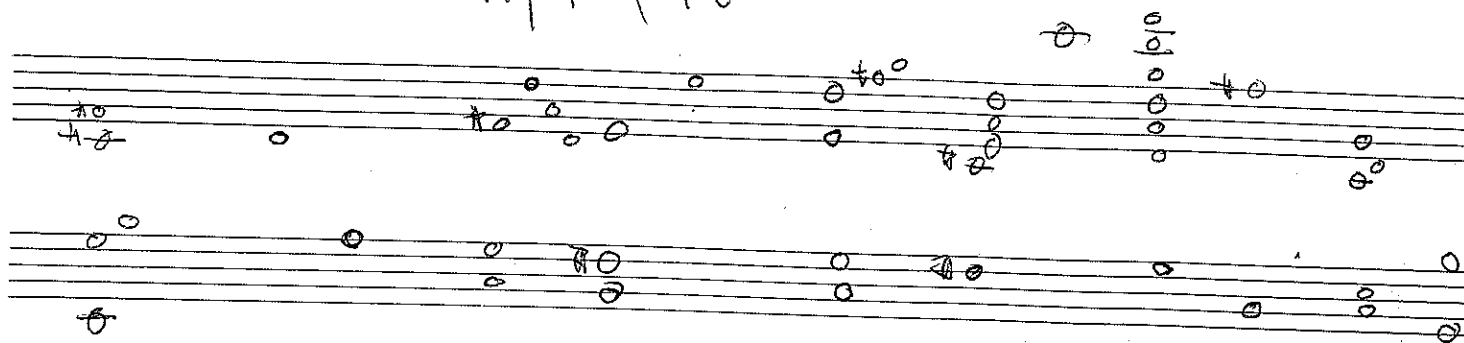
Handwritten musical notation on staves, featuring various notes, accidentals (sharps, flats, naturals), and large curved lines indicating phrasing or structure. The notation is dense and appears to be a sketch or a complex musical exercise.

The notation includes various notes (half notes, quarter notes, eighth notes) and accidentals (sharps, flats, naturals). Large curved lines are drawn around groups of notes, possibly indicating phrasing or structural divisions. The notation is dense and appears to be a sketch or a complex musical exercise.

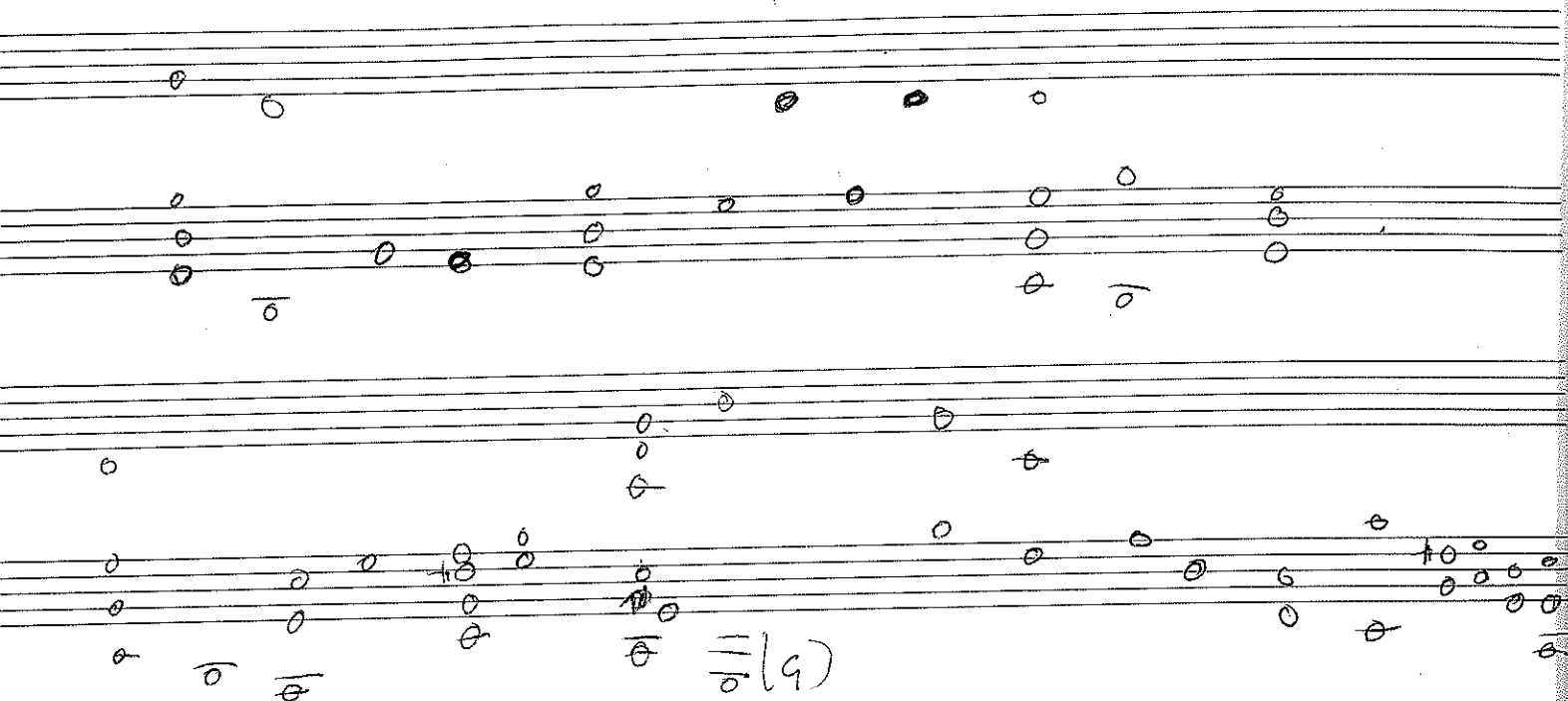
Key features of the notation include:

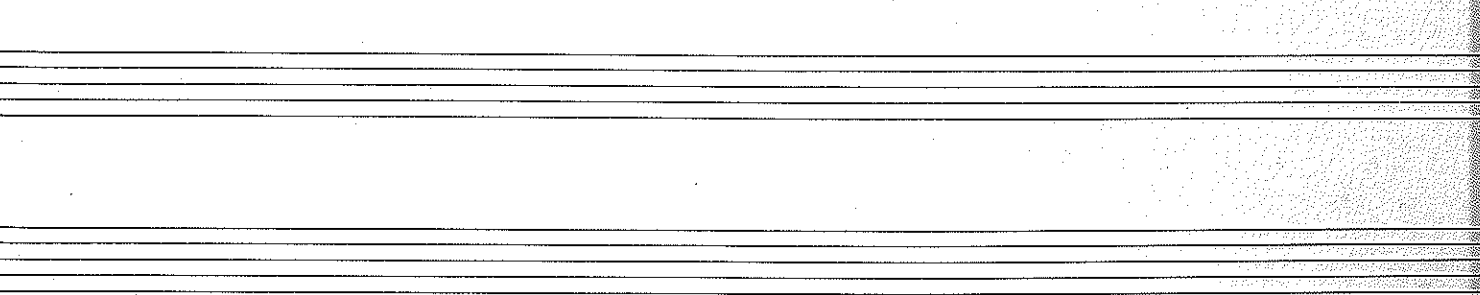
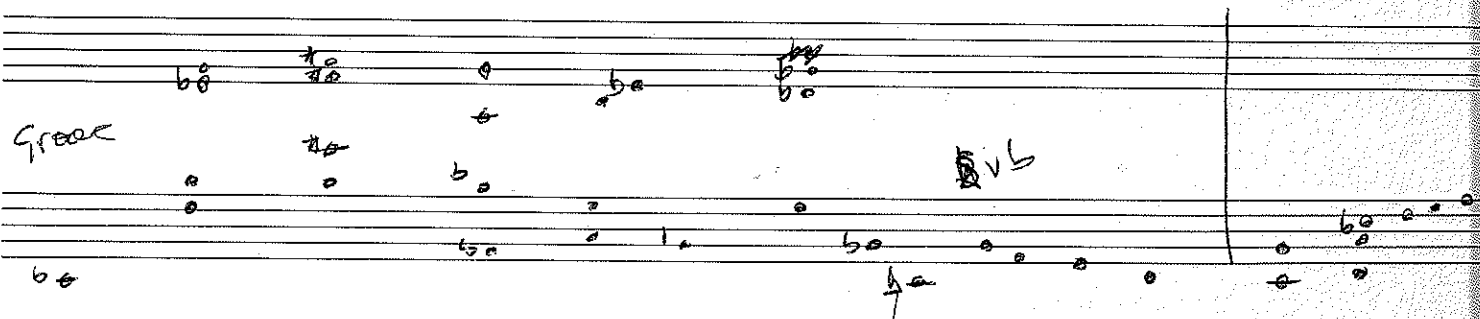
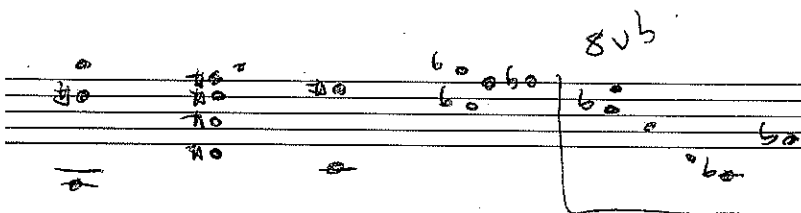
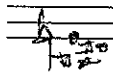
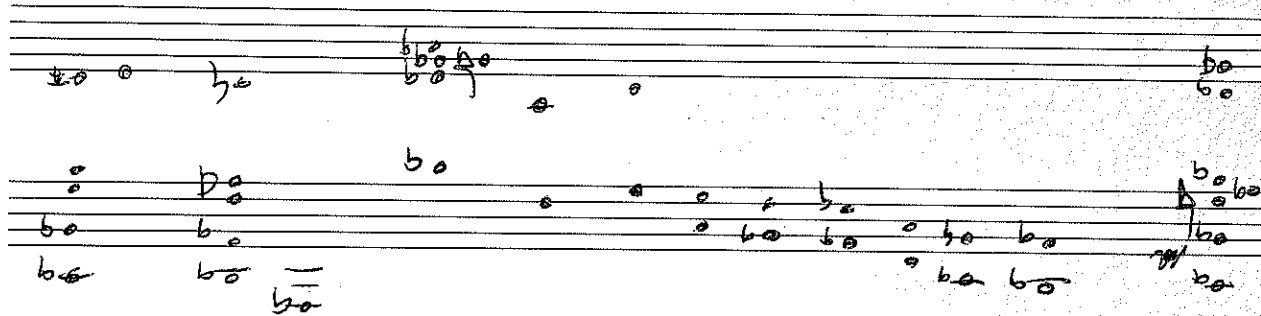
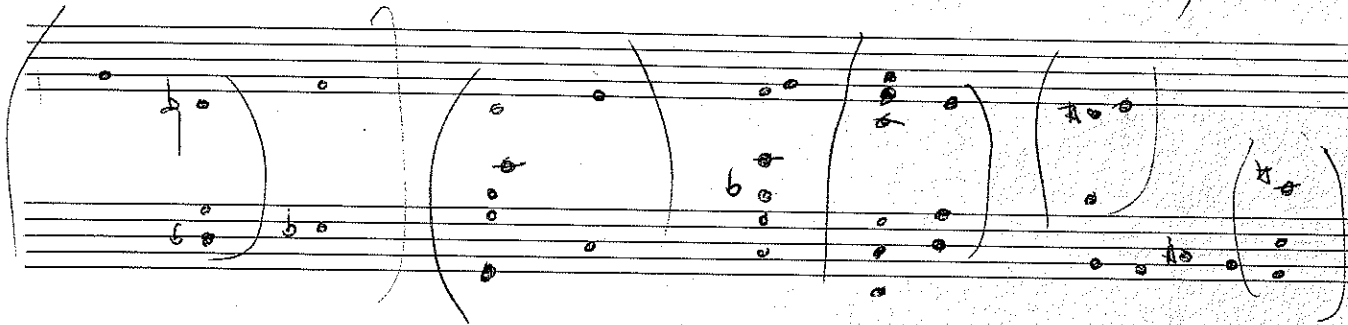
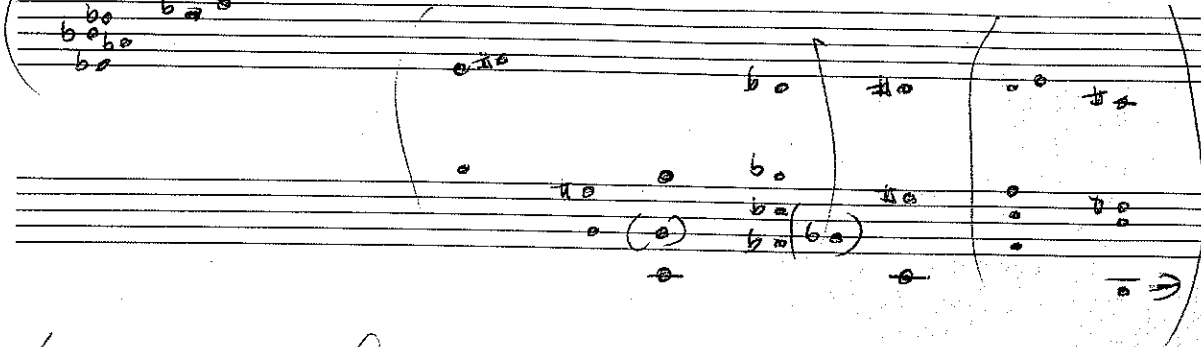
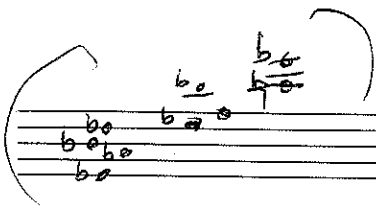
- Notes with various accidentals (sharps, flats, naturals).
- Large curved lines indicating phrasing or structure.
- Complex groupings of notes and accidentals.
- Handwritten symbols and markings throughout the staves.

11/12/98



12





d ! ! ! ! !

14

Handwritten musical notation on two staves. The first staff contains notes with flats and a vertical line. The second staff continues the notation with a curved arrow pointing from the first staff to the second.

Handwritten musical notation on two staves. The first staff contains notes with flats. The second staff continues the notation with notes and a vertical line.

Handwritten musical notation on two staves. The first staff contains notes with flats. The second staff continues the notation with notes and a vertical line.

Handwritten musical notation on two staves. The first staff contains notes with flats and a vertical line. The second staff continues the notation with notes and a vertical line.